



ADZ-10W Basic

Basic Version with Bluetooth function



ADZ-JC10 10W基础版

3W绿光激光, 波长520nm

Green Laser: 3W, Wavelength 520nm

3W红光激光, 波长638nm

Red Laser: 3W, Wavelength 638nm

4W蓝光激光, 波长450nm

Blue Laser: 4W, Wavelength 450nm

激光寿命: >10,000小时

Laser Lifespan: >10,000 Hours

激光等级: Class IV

Laser Class: Class IV

防护等级: IP25

Protection Rating: IP25

1.工作环境: 户外及室内, -25°C至40°C

1.Operating Environment: Indoor & Outdoor, -25°C to 40°C

2.扫描系统: 25K振镜, 光学角度±30°

2.Scanning System: 25K Galvanometer, Optical Angle ±30°

3.控制模式: DMX512、自动、手动、主从同步

3.Control Modes: DMX512, Auto, Manual, Master-Slave Synchronization

4.电源: 100-250V, 50/60Hz

4.Power Supply: 100-250V, 50/60Hz

5.额定功率: ≤200W

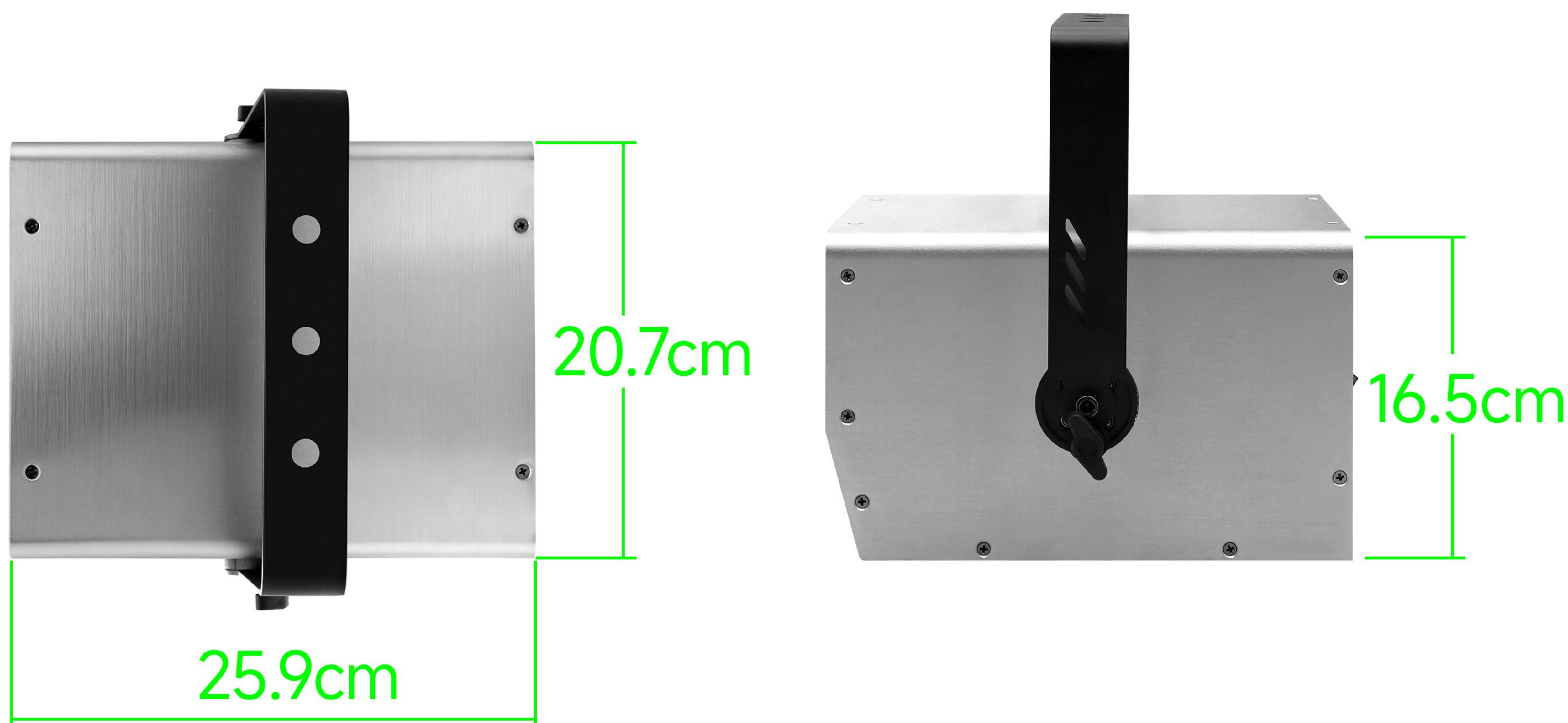
5.Rated Power: ≤200W

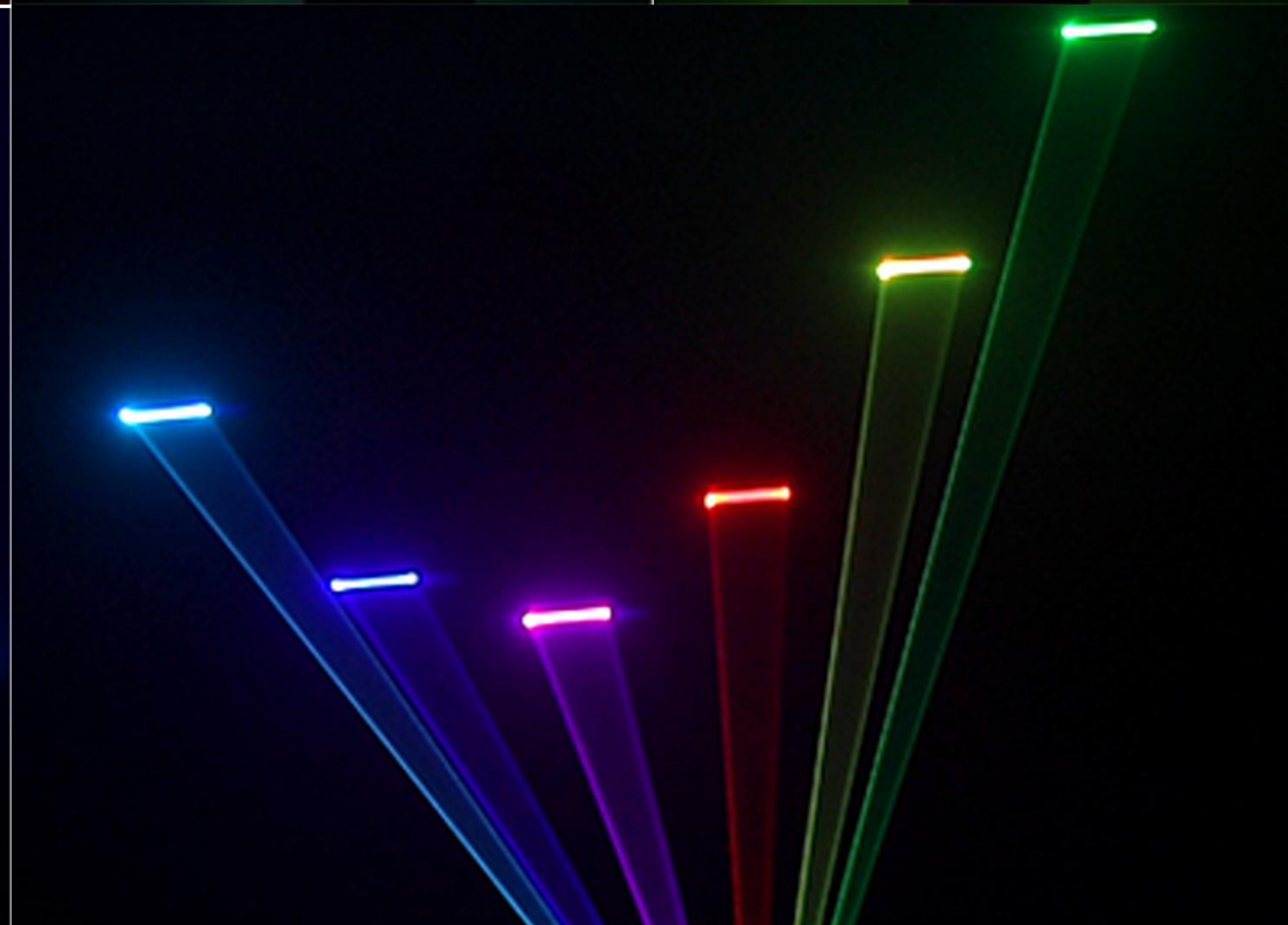
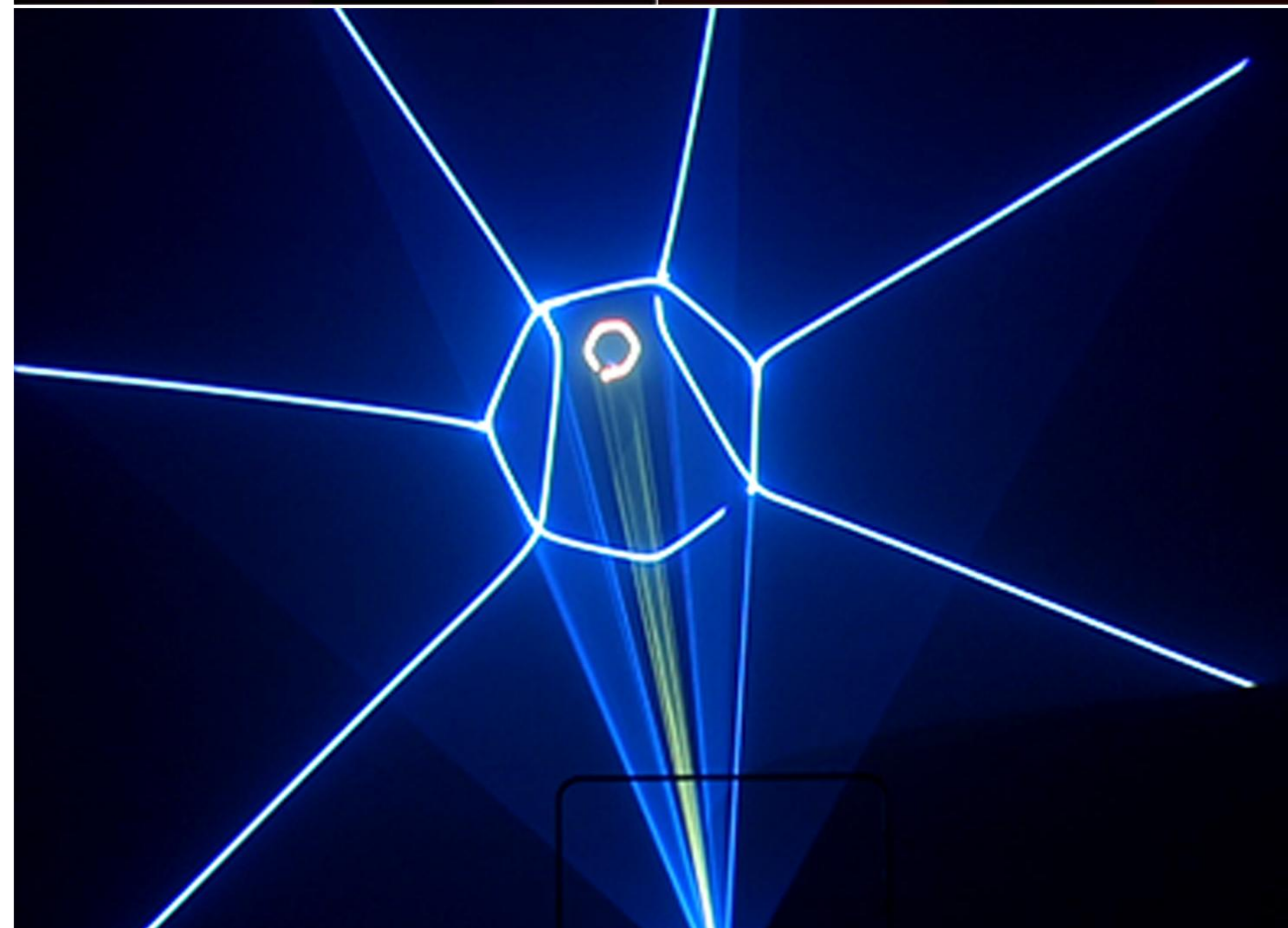
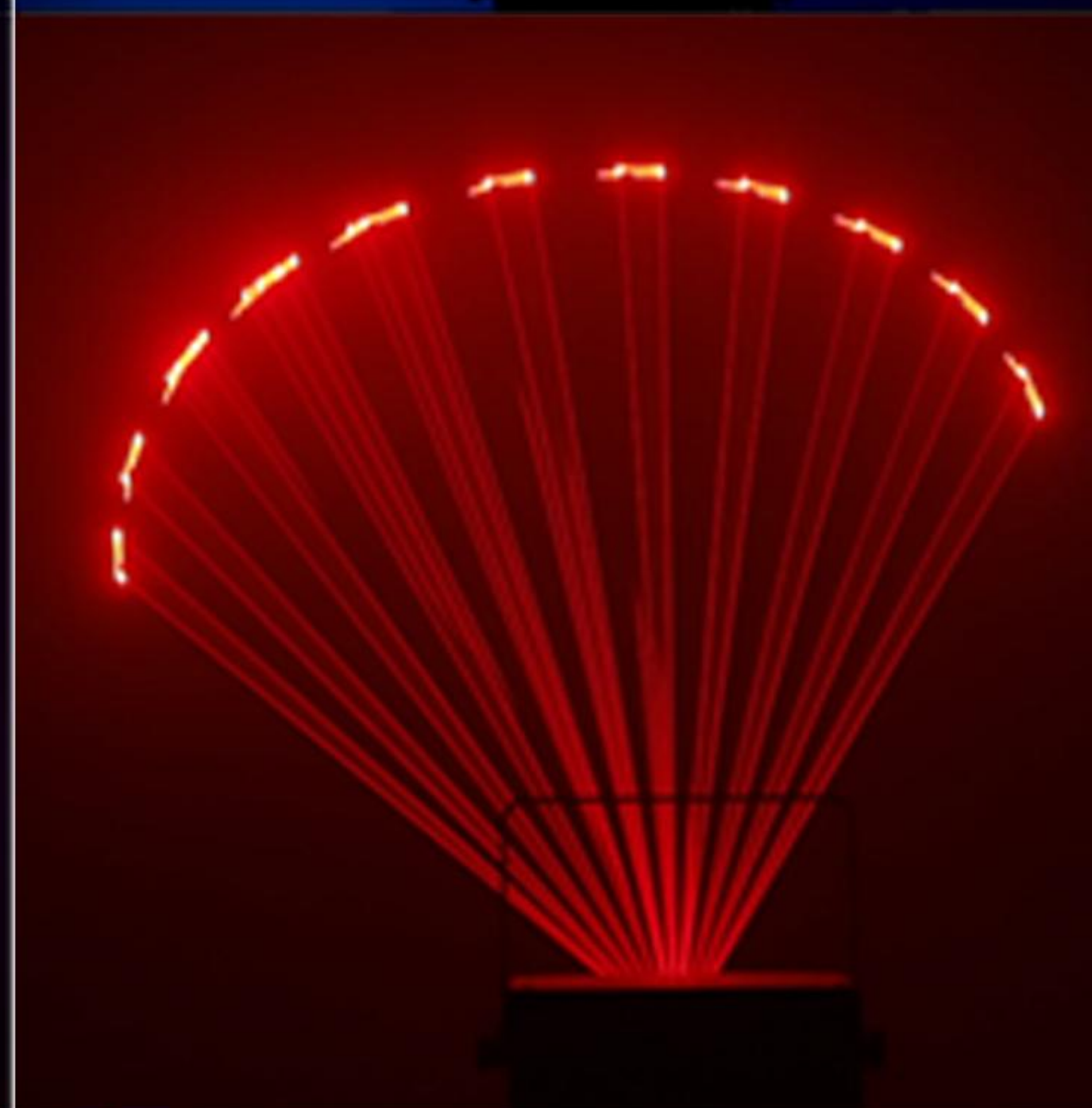
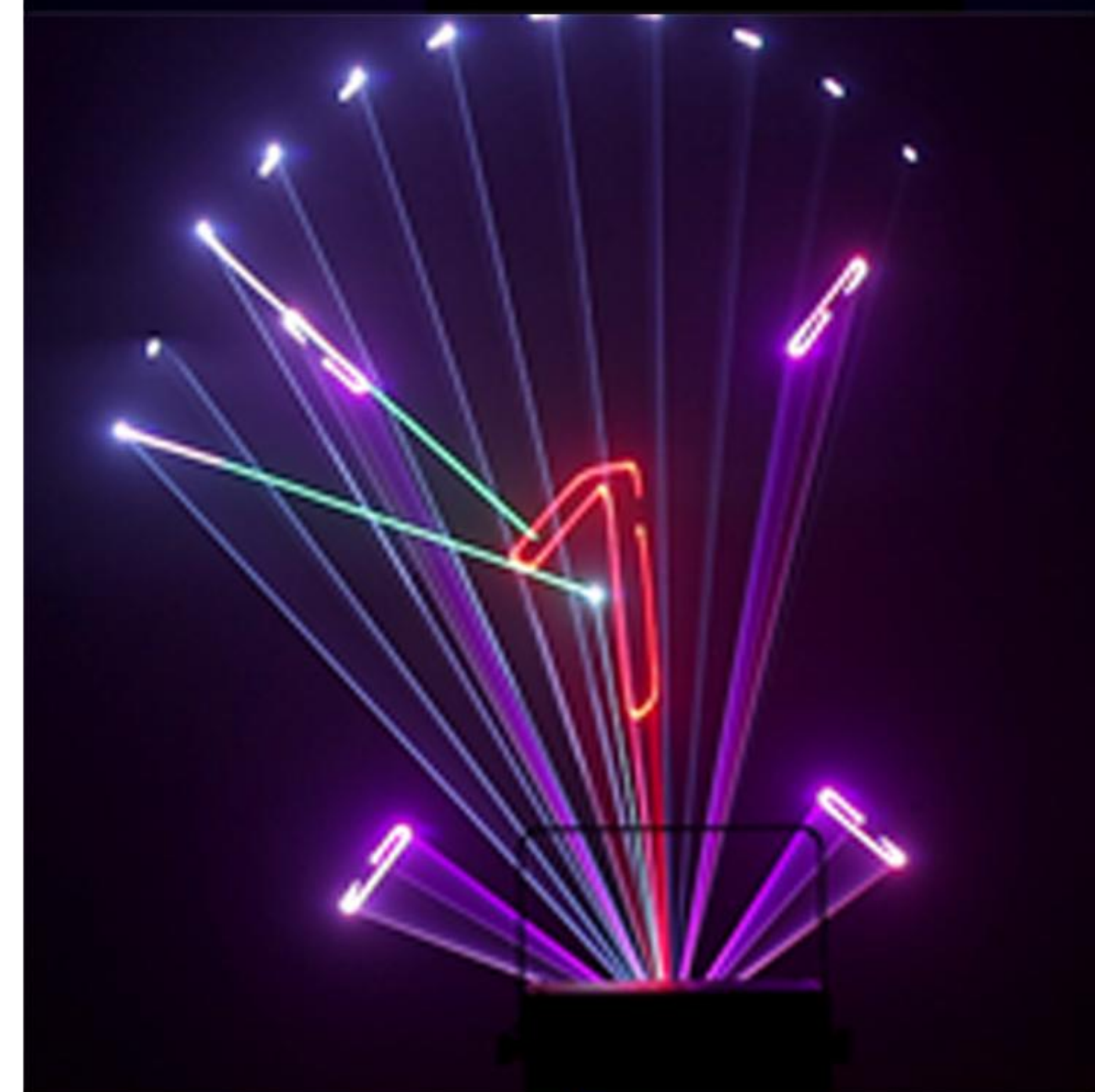
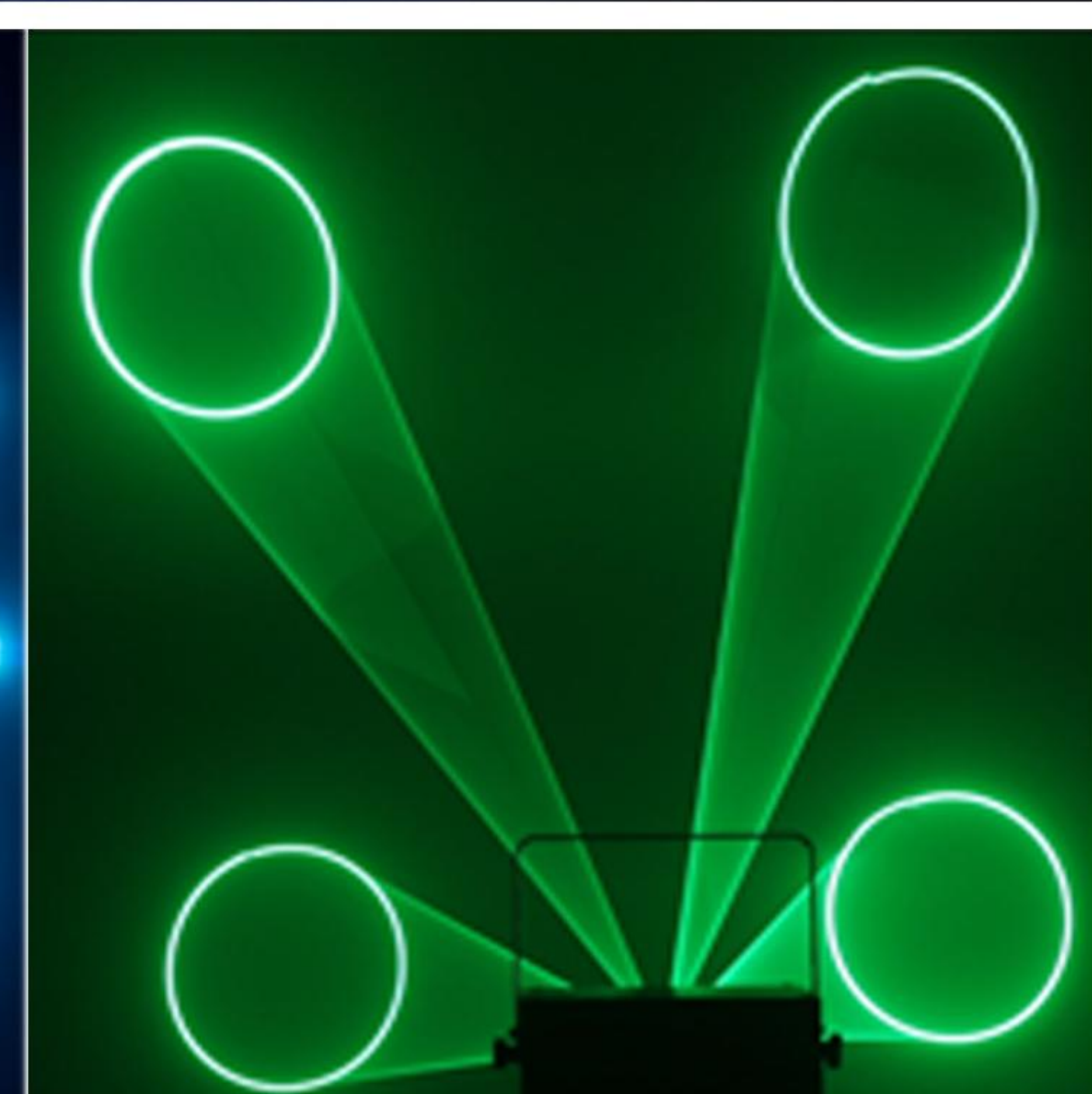
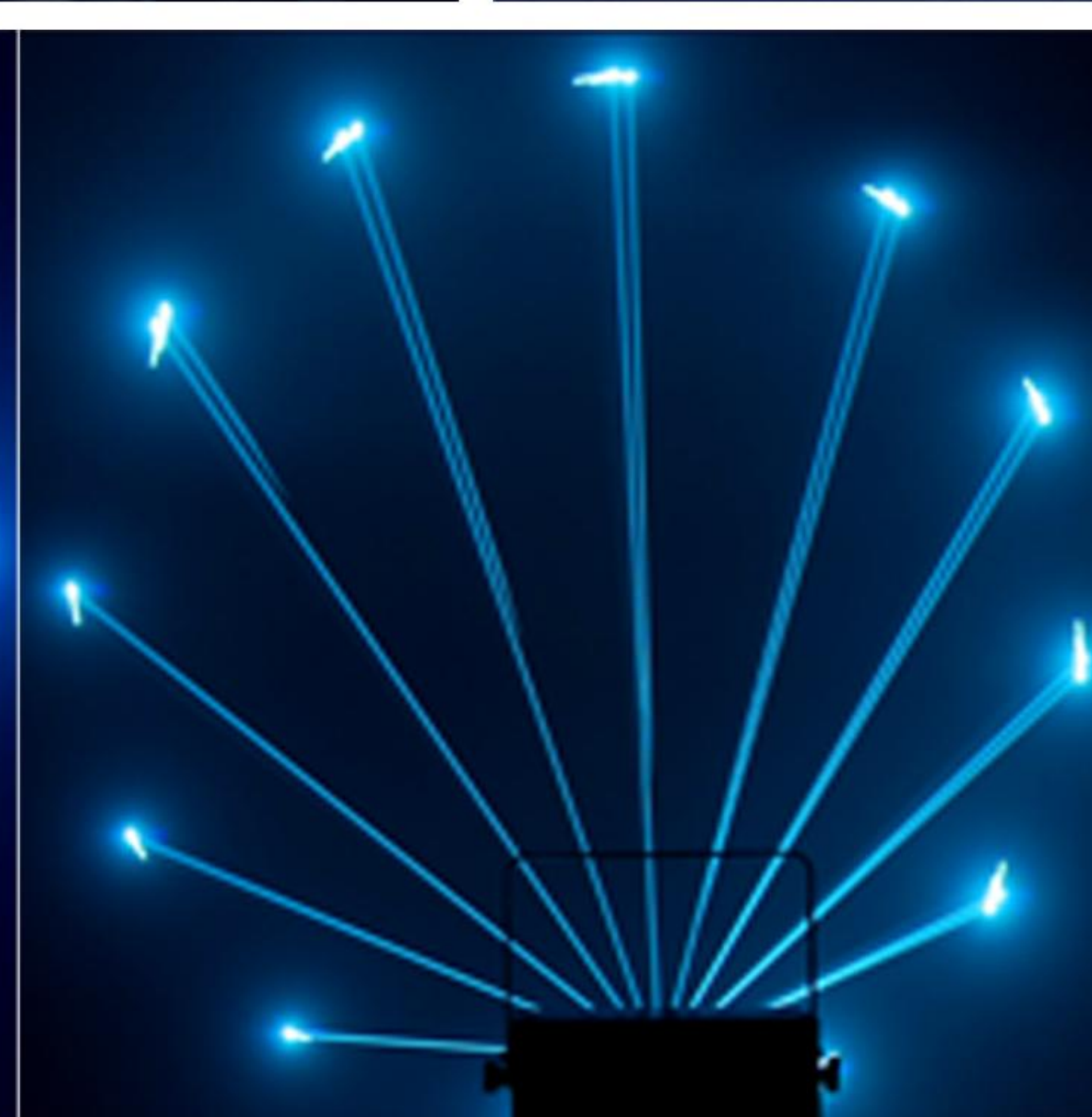
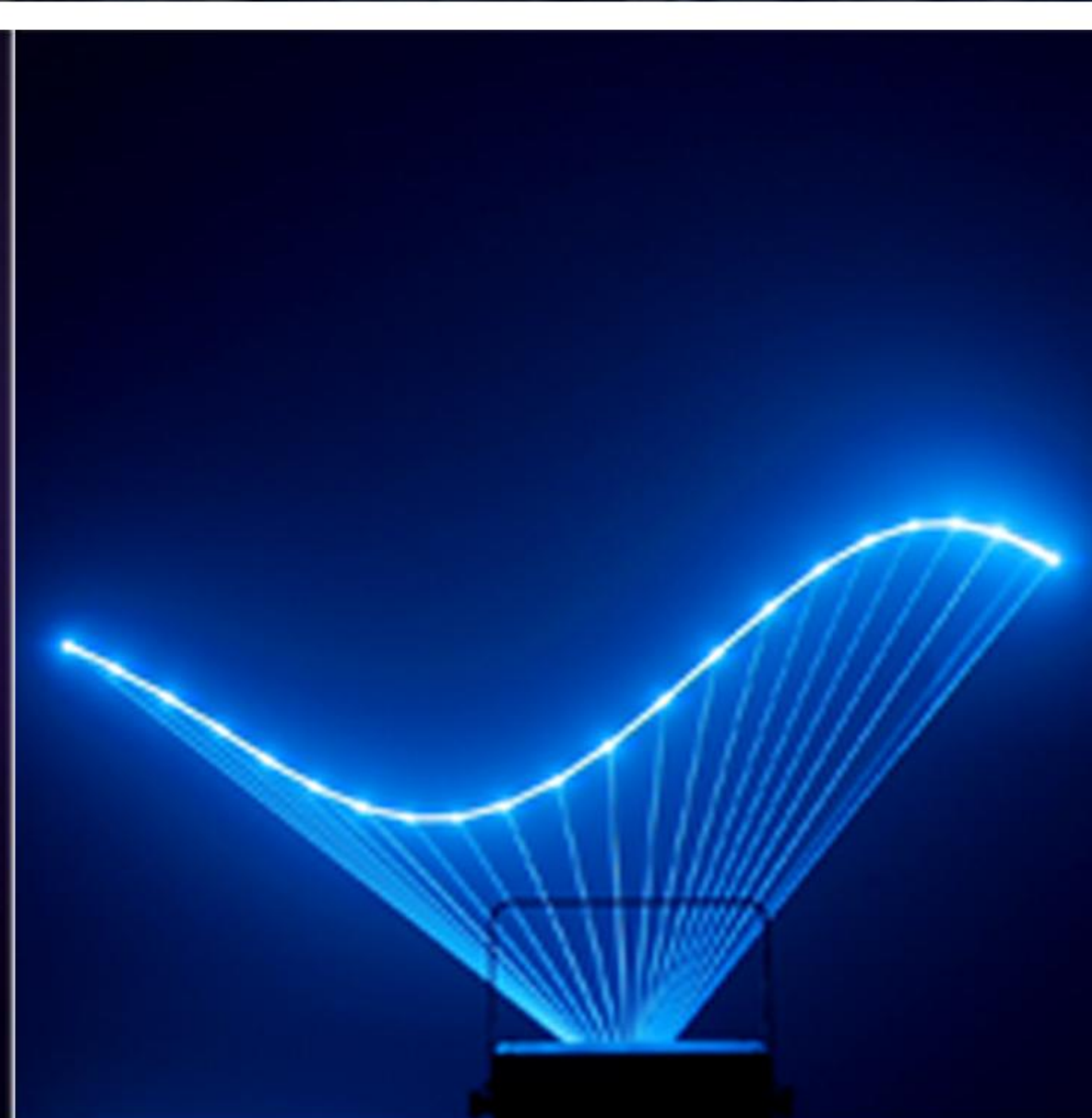
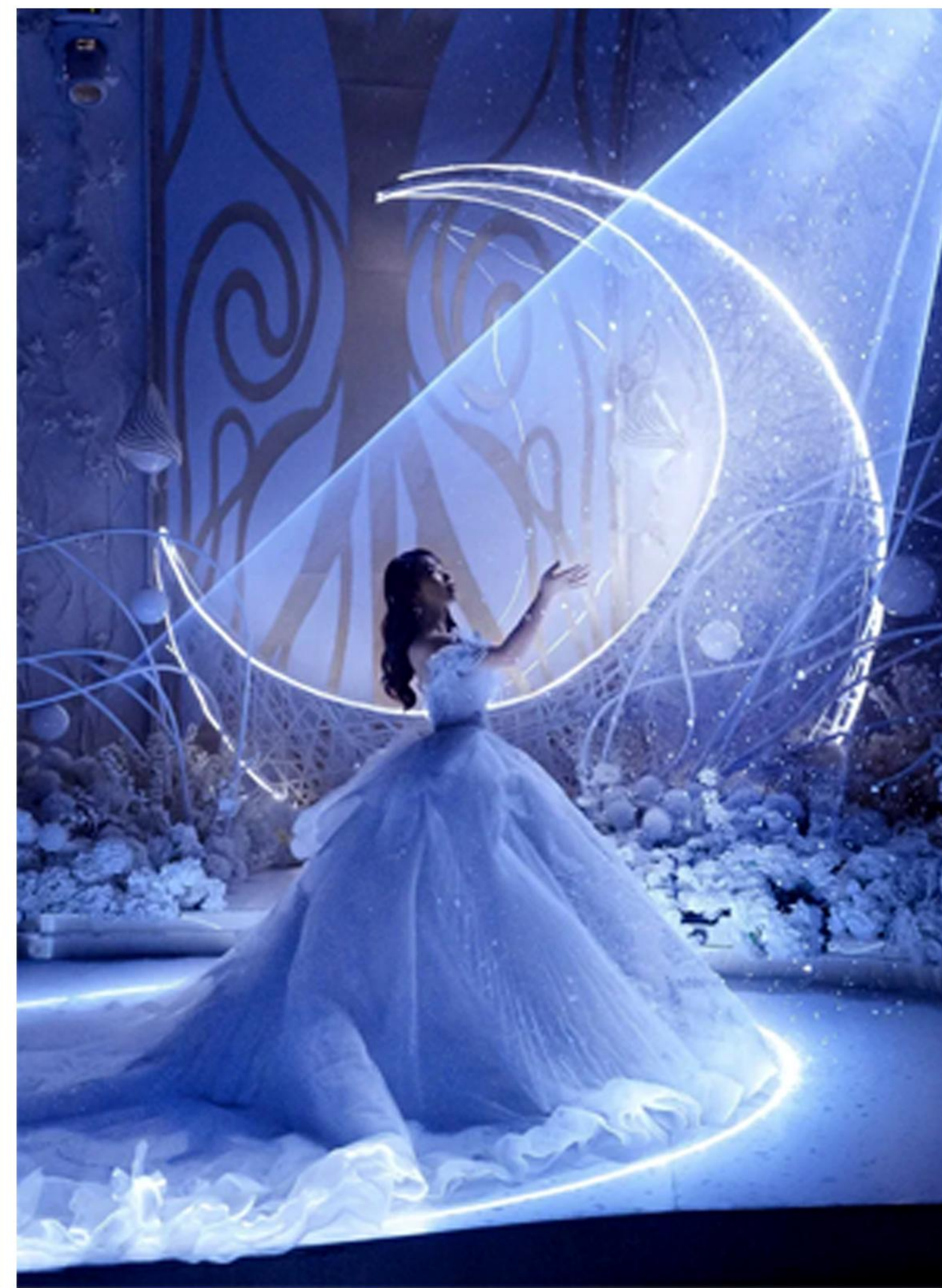
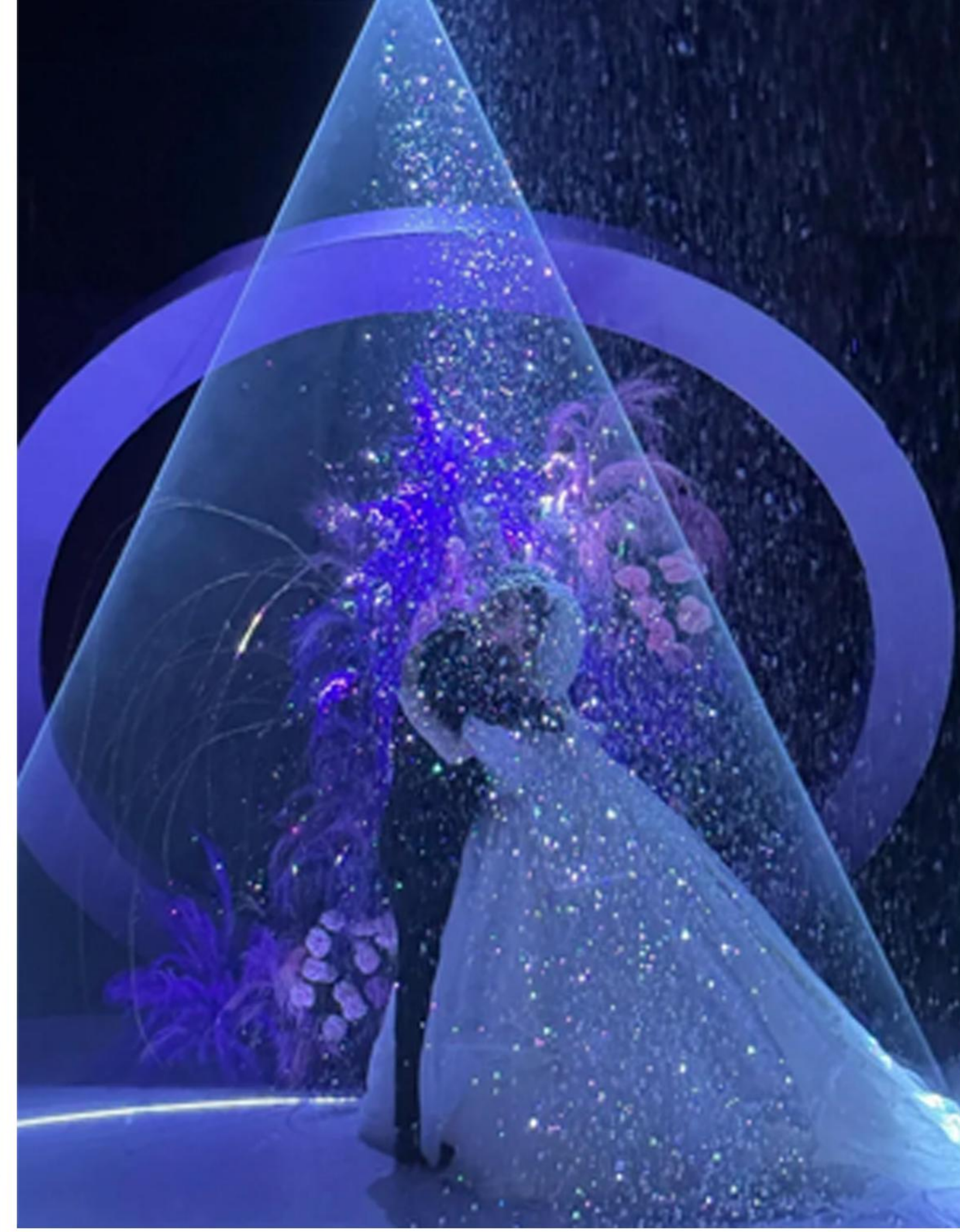
6.尺寸: 207×259×165mm (高)

6.Dimensions: 207 × 259 × 165mm (H)

7.重量: 5.5kg

7.Weight: 5.5kg







1.确认选择按钮

2.菜单功能选项

3.上一项

4.下一项

5.电源开关

6.保险丝

7.电源输入

8.DMX信号输入

9.DMX信号输出

1.Confirm/Select Button

2.Menu Function Options

3.Previous Item

4.Next Item

5.Power Switch

6.Fuse

7.Power Input

8.DMX Signal Input

9.DMX Signal Output